



A.H. BEARD®
Health Rest



Genius



ADJUSTABLE BASE
OWNER'S MANUAL

table of contents

Safety Precautions and Usage Statements	1-2
Parts List	3
Base Overview	4
Quick Reference Guide	5
Installation Guide	6-8
Remote Control	9
Head Board Bracket Installation	10-11
Emergency Power Down Box	12
Pairing the Remote	13
Setting up Two Bases	14-15
Troubleshooting	16
Accessories	17

safety precautions and usage statements

Attention: Important Safety Disclaimers

Read all instructions before using your adjustable base. Save these instructions.

To reduce the risk of shock, burns, fire or injury:

Always unplug the base from the electrical outlet before servicing any part of the base. To reduce risk of electric shock, unplug the base before cleaning. To safely disconnect, ensure the base is in a flat position with all motors off, and unplug from power source. Keep the power cord away from heated surfaces. Never operate the base when the air openings are blocked. Keep air openings free of lint, hair and the like. Do not drop or insert any object into any opening.

Discontinue use of the bed base and contact a qualified service center if: it has a damaged cord or plug, if it is not working properly, or it has been dropped into water.

Only use this bed base for its intended use as described in this manual. Do not use accessories/attachments that are not recommended by the manufacturer.

Close supervision is required when the bed base is used by or near children, convalescents or disabled persons.

Outlet Safety:

For optimal safety and operation, plug bed base into a surge protector (not included).

The bed base should only be plugged directly into a wall outlet or surge protector (strongly recommended). Improper connection of the equipment can result in the risk of electrical shock, electrical fire or faulty operation of this bed base. If the plug does not fit your outlet, contact a qualified electrician to install a suitable outlet. Unauthorized modification or failure to use a wall outlet or surge protector could

void the electrical portion of your warranty.

Warranty Warning:

Do not open or tamper with control box, motors, or remote (with the exception of battery compartments). The warranty will be void if the internal workings of these components are tampered with. For complete warranty information visit www.ergomotion.com or refer to the warranty card included with the base.

In-Home Use and Hospital Disclaimer:

Ergomotion adjustable bed bases are designed solely for in-home use. This base was not designed as a hospital bed and is not designed to meet hospital standards. Do not use this base with TENT TYPE oxygen therapy equipment or near explosive gases.

Pacemaker Notice:

This product contains Neodymium MAGNETS which may interfere with devices such as pacemakers, ICD's and any other device sensitive to magnetic fields. It is STRONGLY recommended that owners of such medical devices consult their physician prior to using this product.

It is possible that some pacemakers may falsely interpret the optional massage feature vibrations as movement/exercise. This is a common occurrence with any product that creates a vibrating movement and may not affect the pacemaker. Please consult your physician before using the massage feature.

safety precautions and usage statements

Pets and Small Children:

Immediately dispose of all packing materials as it may pose a smothering risk to small children and pets. To avoid injury, it is not advised to allow children and small pets to play on or under the bed. Children should not operate the bed base without adult supervision.

Safety Features:

Casters (optional leg accessory) are equipped with locking wheels to prevent unwanted movement. Even when locked and unable to roll, it is possible for the casters to slide. Free release head and foot motors are designed to lower the mattress by retracting only with gravity, never pulling downwards, which minimizes pinch points.

Product Ratings:

The lift motors are not designed to operate continuously for more than 2 (two) minutes in an 18 (eighteen) minute time period or approximately 10% duty cycle. Attempting to circumvent or exceed this rating will shorten the life expectancy of the product and may void the warranty.

Weight Limits:

This product is not rated to support weights in excess of 385 kg inclusive of the mattress and bedding. The base will structurally support this weight, provided it is evenly distributed across the bed base. The adjustable base is not designed to support or lift this amount in the head or foot sections alone. Exceeding this weight restriction could damage the bed and/or cause injury and will void the warranty.

Acoustics:

The massage function will emit a noticeable tone during operation. As the massage intensity level is increased, the tone will intensify. The volume of this tone is directly related to the location environment. For example, when demonstrated in a show room, the surrounding environmental noise will cover some of the massage noise. However, when installed in a home setting with wooden floors, carpeted or not, the massage volume will be more noticeable. In normal base operation, the wheels which allow the bed to maintain its distance from the wall, will make contact with the steel platform supports of the base creating a contact noise. When entering, exiting or shifting weight on the base, this contact noise may be audible as the wheels make contact. This is normal.

SAVE THESE INSTRUCTIONS.

FCC Compliance:

This device complies with part 15 of the FCC Rules. Operation is subject to the following two conditions: (1) This device may not cause harmful interference, and (2) this device must accept any interference received, including interference that may cause undesired operation.

To comply with the FCC RF exposure requirements, no change to the antenna or the device is permitted. Any change to the antenna or the device could result in the device exceeding the RF exposure requirement and void user's right to operate the device.

Radio Frequency: 2.4 GHz

parts list

Before discarding the packing materials- ensure all the parts are accounted for.

All electronics and components that need to be installed are located in boxes under the base or attached to the frame.

- A) Wireless Remote Control and (3) AAA batteries
- B) Mattress Retainer Bar (1)*
- C) Legs (4)
- D) Power Cord (1)
- E) Power Supply (1)
- F) Power Down Box (1)*
- G) Connecting Strap*†
- H) SmartSync™ Cord (1) †

Headboard Bracket Components (only included on select models):

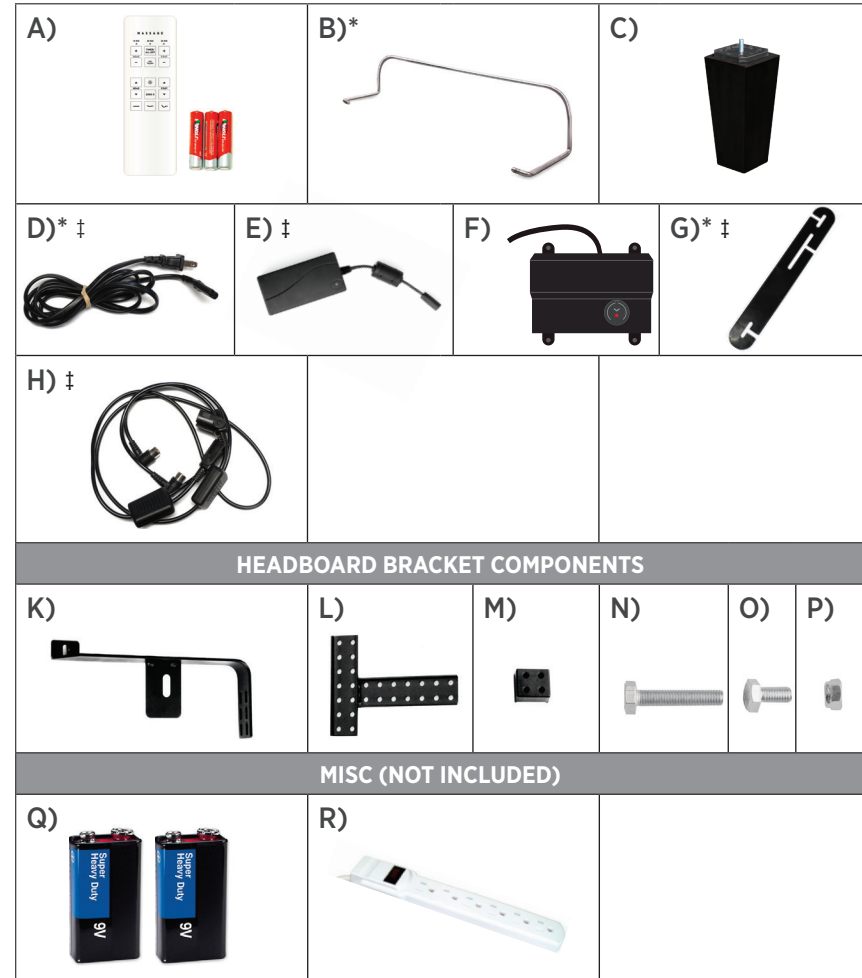
- K) Headboard Bracket (2)
- L) T-Bracket (2)
- M) Spacers (2)
- N) Long Bolts (8)
- O) Short Bolts (10)v
- P) Nuts (18)

Misc Parts (not included):

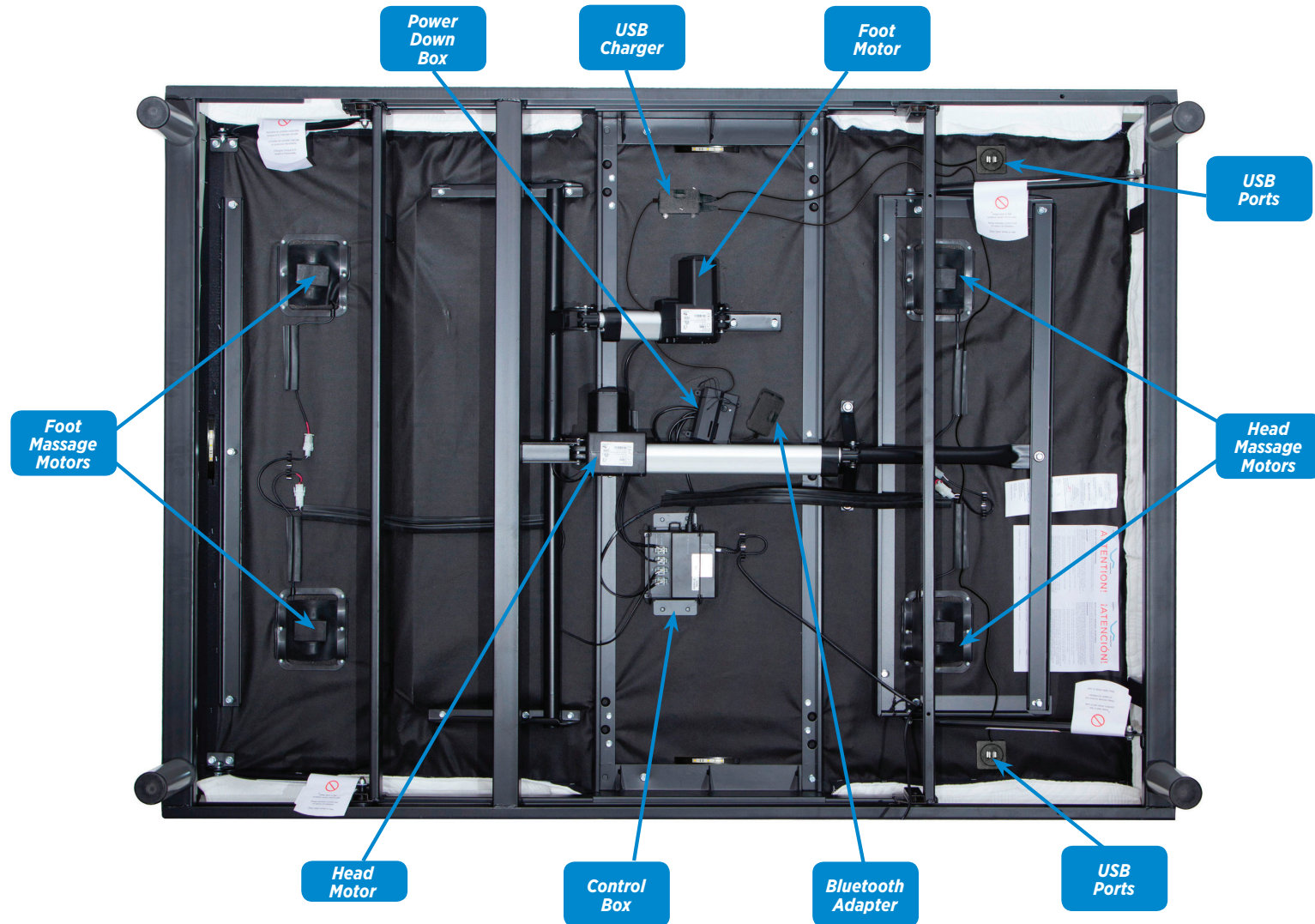
- Q) 9 Volt Batteries (2)
- R) Surge Protector

* These items are attached to the base for shipping purposes. Carefully remove from base and set aside.

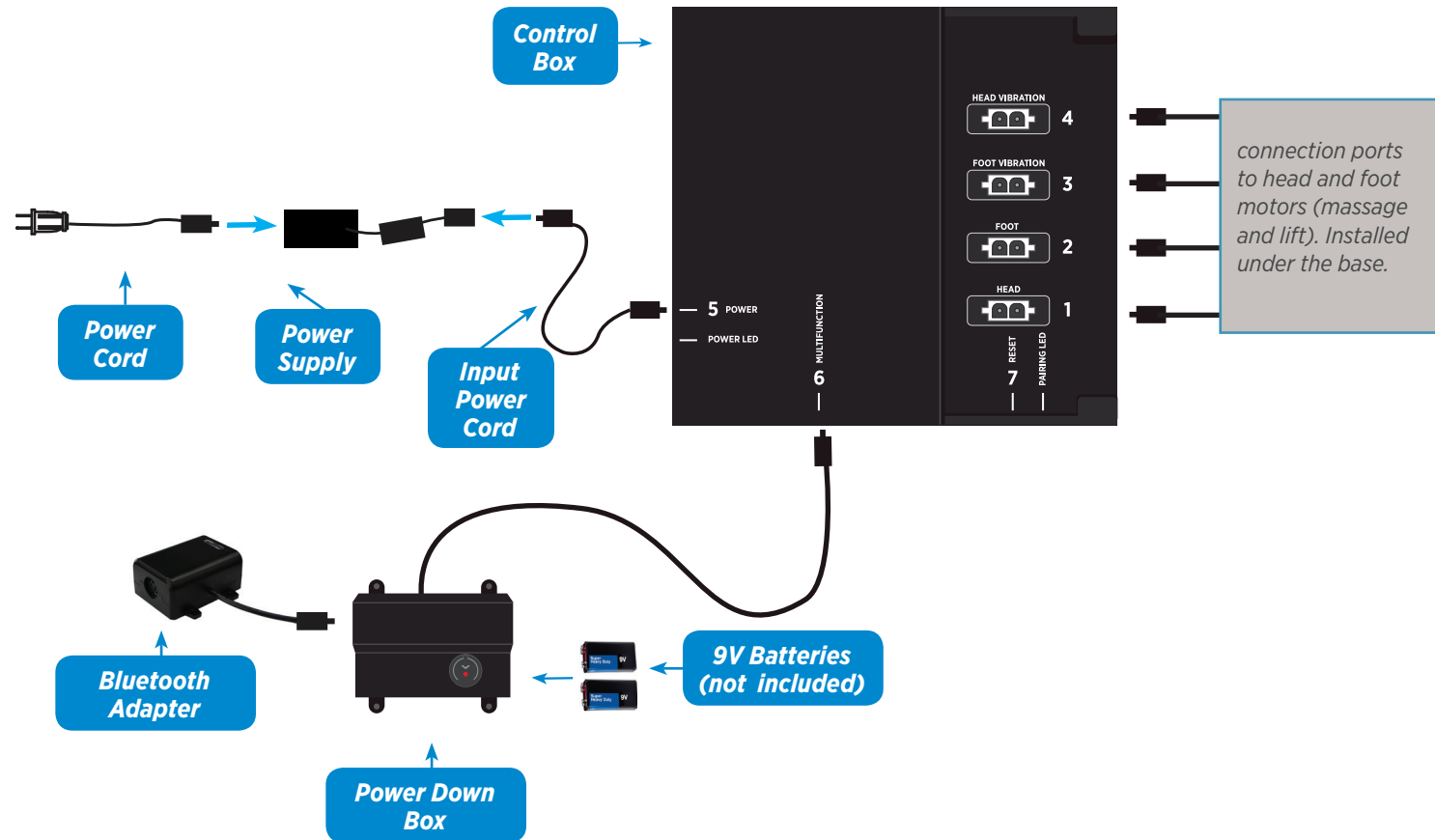
† Only included in Twin, Twin Long, Queen Split and Cal King Split bases.



base overview



quick reference guide



installation guide

Always use two people when setting up the base.

STEP 1

Place the bed base box in a desired location with the bottom of the box facing up.

Remove the binding straps and packing materials, making sure not to puncture the box with any sharp objects.



STEP 2

Remove the bed base from the box keeping the bottom of the base facing upwards.

STEP 3

To install optional headboard brackets: See detailed installation instructions on page 13.

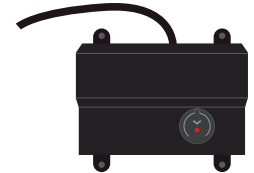
To install the legs, thread the washer over the bolt of the leg with the recessed side facing the leg, and tighten by hand. **Do not over tighten.**

STEP 4

To sync two bases with the SmartSync™ cord - see page 15.

Uncoil the Power Down Box from the frame and install (2) 9 Volt batteries- not included.

Place box on the ground. Ensure that it is easily accessible when the base is turned to its upright position.



STEP 5

Uncoil input cord (connected to control box's power port) and plug into Power Supply.



STEP 6

Uncoil the Power Cord and connect to the Power Supply. Place Power Supply on the ground and extend from the base. Ensure that the Power Supply and all attached cords are directed toward the desired surge protector.



For customer support, visit www.ahbeard.com or call: 1300 654 000

installation guide

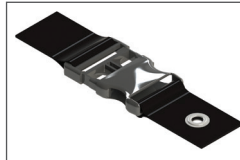
If setting up a Divided Queen adjustable base, please see the additional instructions that were provided for setup before proceeding.

STEP 7

Carefully flip the base over on to its legs. Important: Two people are required to move the bed base. Do not drag across the floor. Do not rest frame on its side, excessive pressure may damage the legs.

STEP 8

Use the **CLIP LOCK** system to connect mattress to the base.



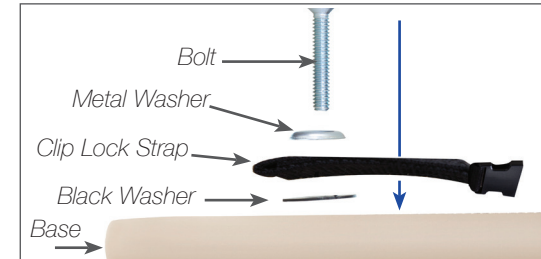
STEP 9

Begin by removing both screws on platform of base using Phillips head screw driver.



STEP 10

Attach female end of clip lock section to base. Follow the bolting diagram to install the Clip Lock Strap. Repeat step for other side.



STEP 11

The male end of clip lock system is attached to underside of mattress. Place mattress on base and secure clip lock to base.



STEP 12

Plug the base into a power source.

A surge protector is strongly recommended.



For customer support, visit www.ahbeard.com or call: 1300 654 000

installation guide

STEP 13

Ensure batteries are correctly installed in the back of the remote. Quickly test functions to verify proper setup before placing mattress on base. Press **FLAT** to return the base to a flat position.



If the mattress does not have a Clip Lock System, please proceed to Step 14 for Mattress Retainer Bar installation.

This is an optional accessory that can be used if the mattress does not have a Clip Lock System.

STEP 14

Locate the mattress retainer bar brackets. Slide the left side of the mattress retainer bar into the bracket. Pull the retainer bar to the opposite bracket and secure the right side.

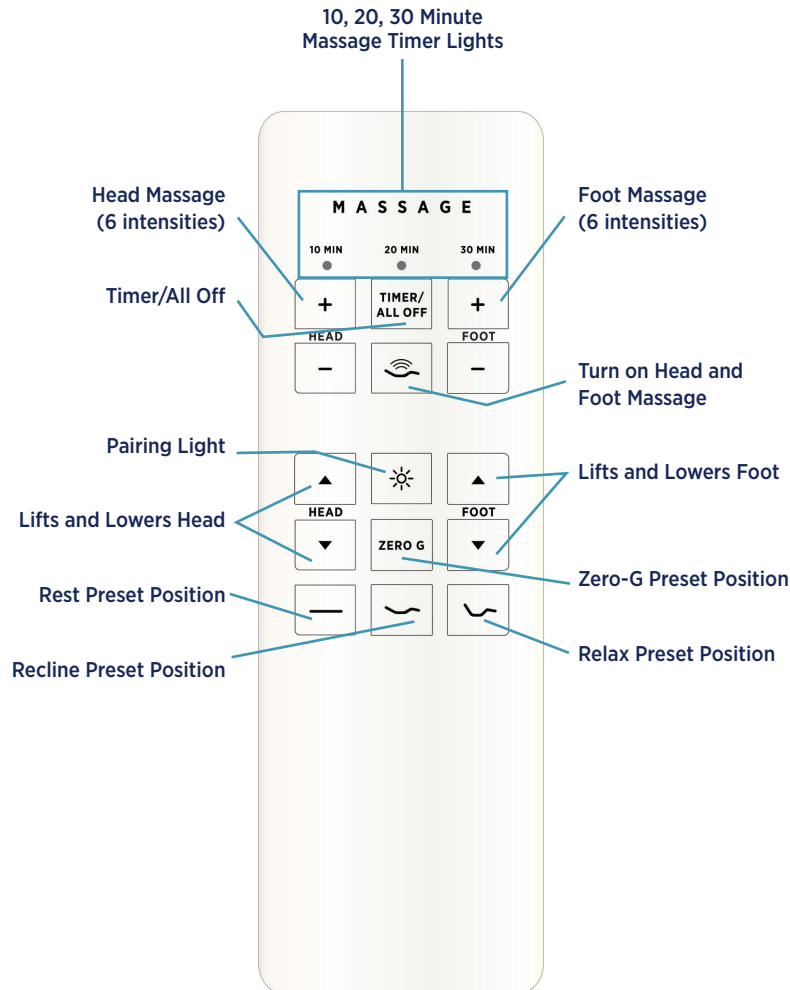


Basic setup is now complete! See page 9 for remote control operating instructions.

For customer support, visit www.ahbeard.com or call: 1300 654 000

remote control

REMOTE OVERVIEW



MESSAGE FEATURE



The **MESSAGE** button activates and toggles through message levels 1, 3 and 6. A 4th press of the button will turn the message off.



The **HEAD** button will turn on the head massage. Press '+' or '-' to cycle through 6 message intensities.



The **FOOT** button will turn on the head massage. Press '+' or '-' to cycle through 6 message intensities..



The **TIMER/ALL OFF** button Starts massage at level 3. Select a 10, 20 or 30 minute message interval. Pressing a fourth time will turn off massage.



The light on the top of the remote indicates a 10, 20 or 30 minute timer setting. Massage will automatically shut off after 10 minutes if the massage timer isn't set.

ADJUST



The **HEAD** ▲ ▼ arrows lift and lower the head section of the base.



The **FOOT** ▲ ▼ arrows lift and lower the foot section of the base.

ONE TOUCH BUTTONS



Pairing Light provides soft glow lighting (see pairing instructions if required on pg. 13).



One touch **ZERO G** (Recover) preset position. Zero-G adjusts your legs to a higher level than your heart helping to relieve pressure off the lower back and promote circulation.



One touch **Rest** preset position.









One touch **Relax** preset position.



One touch **Recline** preset position.

headboard bracket installation guide

Headboard Brackets are an optional accessory and can be purchased separately.

HEADBOARD BRACKET COMPONENTS					
<p>Headboard Bracket (2)</p> 	<p>T-Bracket (2)</p> 	<p>Spacer (2)</p> 	<p>Long Bolt (8)</p> 	<p>Short Bolt (10)</p> 	<p>Nut (18)</p> 

A 9/16" & 1/2" socket and crescent wrench are necessary to complete installation.

STEP 1

- a.) Align the hole in the bracket to the brass sleeve into which the leg threads. Hold the bracket in place and screw the leg into the base until it is snug. **DO NOT OVERTIGHTEN.** Too much force may cause the leg to spin freely.
- b) Align the tab with the hole in the frame (located towards the foot of the base) and use a short bolt and nut to secure the bracket. Make sure the bolt is tight.



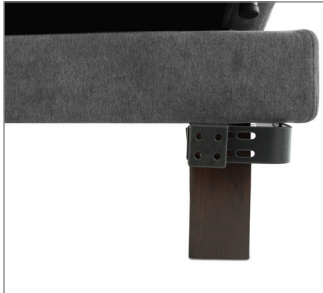
For customer support, visit www.ahbeard.com or call: 1300 654 000

headboard bracket installation guide

STEP 2

Attach the plastic spacer and T-Bracket.

- a.) Measure the distance between the mounting holes on the headboard and install the spacer and attachment plate to accommodate the headboard.
- b.) To install the plastic spacer and attachment plate, you will need 2 (two) long bolts and 2 (two) nuts. Place the spacer and attachment plate in the desired location and slip the bolts through the holes with the head of the bolt facing outward. Position the bolts diagonally on the spacer. Use the 9/16" socket and wrench to tighten the bolts.



STEP 3

You may now connect your headboard to the attachment plates using the remaining short bolts and nuts to secure it to the brackets. The heads of the bolts will face outward. Use a 9/16" socket and 1/2" wrench to tighten the bolts.

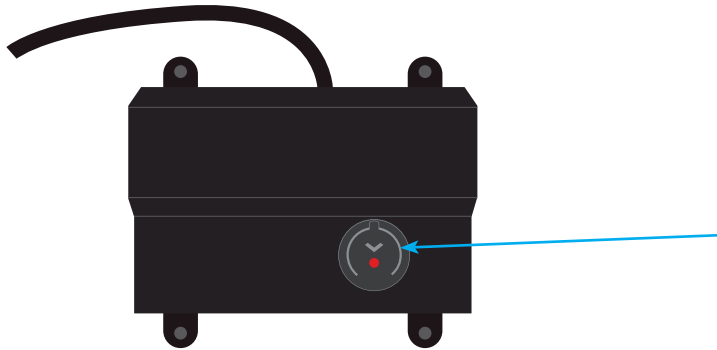
emergency power down box

In the event that the base is stuck in an articulated position during a power outage- the Power Down Box will return the base to a flat position.

(2) 9 Volt batteries are required to operate the power down feature and are NOT included.

STEP 1

Locate the Power Down Box under the base.



STEP 2

Press and hold the button until the base is flat.



Note: The button can be pressed at any time during the loss of power to bring the base flat.

For emergency use only.

The Power Down Box can only be used to bring the base to a flat position. It will not bring the base to a flat position when the base is connected to a working power source.

For customer support, visit www.ahbeard.com or call: 1300 654 000

pair remote

The original remote that comes in the box is already paired to the bed base.
No further action is required.

In the event that the remote is not paired with the base, follow the steps below.

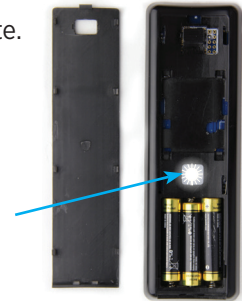
STEP 1

Remove back cover from remote control. Remove and replace batteries.



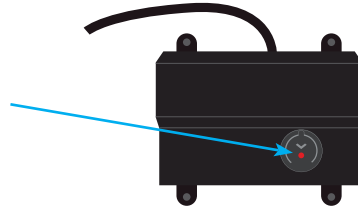
STEP 2

Press and hold button on the back of the remote. The light will begin to flash then become a continuous solid light.



STEP 3

Double click the button on the Power Down Box (this will not cause the base to move). The pairing light will illuminate.



STEP 4

Both lights on the Power Down Box and the Remote will be continuous, then simultaneously turn off. Replace back cover of the remote.

The remote is now paired with the base.



If the Power Down Box is not available- Press Reset button on control box. Pairing LED light on control box will begin to illuminate. Press and hold button on the back of the remote, the button will begin to blink. Both lights will become continuous and then simultaneously turn off.

For customer support, visit www.ahbeard.com or call: 1300 654 000

setting up two bases

If any split setup is being installed, plastic connecting straps are provided (one per base) to secure the bases together. Use both straps to secure the head and foot portions together.

STEP 1

With the bases in their desired location, slightly loosen both legs to allow the strap to fit on the leg bolt, between the leg washer and frame.



STEP 2

Slide side (a) of the connecting strap onto leg bolt. Swing the strap and connect side (b) to the leg bolt. Secure the strap by shifting to the left.



STEP 3

Re-tighten legs. Do not over tighten. Use the remaining strap and repeat on other end of the base.

For customer support, visit www.ahbeard.com or call: 1300 654 000

setting up two bases

If simultaneous operation of two bases is desired, use the SmartSync™ Cord to connect the electronics of both bases together.

STEP 1

Unplug base from power source.

STEP 2

Disconnect the power-down box cable from each control box. Make note where the cable was plugged in.

STEP 3

Connect the male end of each sync cord to control box. Insert it into the same port that you disconnected the power-down box from in Step 2.

STEP 4

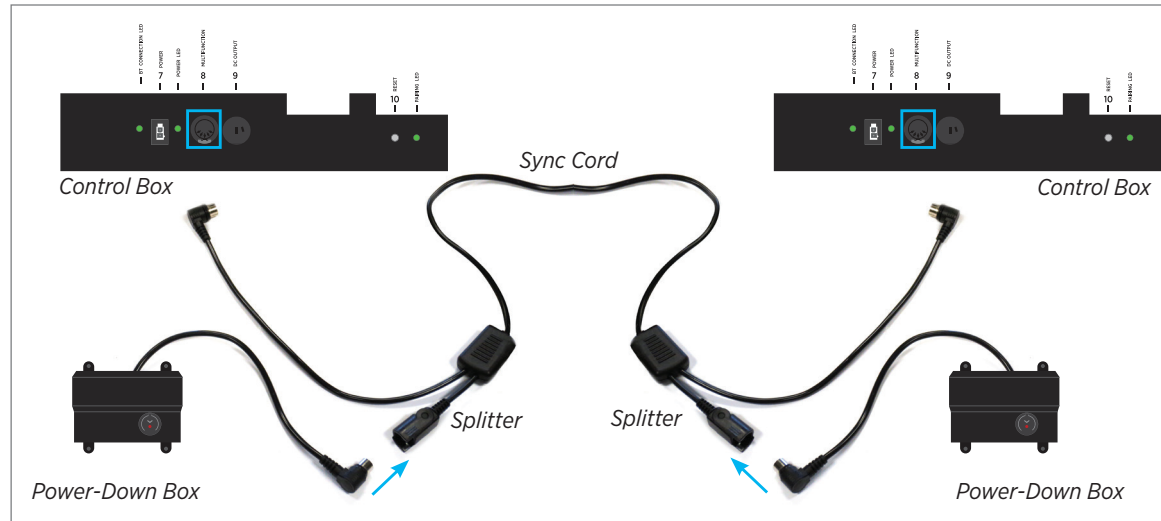
Connect each power-down box male connection to the sync cord female connection (Refer to the illustration below).

STEP 5

Plug base back into the power source.

STEP 6

Check to ensure all cords are securely attached. Both remotes will now operate both bases simultaneously (If the remotes become unpaired, see page 13).



If one or more functions on the bed base have stopped operating:

- Check under the bed base to verify that the wired connections are secure and that there are no cords or bedding obstructing the movement of the base.
- Check to ensure the green LED light is illuminated on the control box. If there is no light, verify that the input and power cords are properly connected.
- Unplug the base for 1 hour to reset the electronic components.
- Plug bed base into a different electrical outlet, or test current outlet with another working appliance (a grounded, electrical surge protector is recommended).

If issue is not resolved by following the instructions above, locate serial number on warranty card or back of remote and call

If issue is not resolved by following the instructions above, locate serial number on warranty card or back of remote and contact AH Beard.

Phone: 1300 654 000 | E-mail: serviceteam@ahbeard.com | Web: www.ahbeard.com

accessories



5" Black Powder Coated Leg
100125



7" Black Powder Coated Leg
100126



5" Black Powder Coated Caster
100063



8" Silver Tapered Leg
100058



Headboard
Brackets

+

+

+

+

CUSTOMER SERVICE

Phone: 1300 654 000

Email: serviceteam@ahbeard.com

Web: www.ahbeard.com

A.H. Beard Pty Ltd

1/35 Bryant Street

Padstow NSW 2211